

MEMORANDUM

To: Monroe County Regional Planning Commission
From: Laura Smith
Date: March 28, 2025
Subject: April 3, 2025, Monroe County Regional Planning Commission Agenda

AGENDA
Monroe County Regional Planning Commission
Boardroom of the
Monroe County Courthouse
Thursday, April 3, 2025
6:00 p.m.

- I. Call to Order
- II. Approval of minutes from the March 6, 2025, meeting.
- III. New Business
 - A. Preliminary Subdivision Plat, 18-lots, Rural Vale Valley, Applicant, Sarah Patterson, for TWM, Athens, Buyers, James Lee and Gerald Summey, Property Owner, Lauren Hamilton Cross, Old Mill Rd., Tax Map 164, Parcel 046.00, approximately 63.0 acres.
 - B. Review of amended RV Park and Mobile Home Park resolutions.
 - C. Continued review of the Monroe County Subdivision Regulations.
 - D. Discussion of the Annual Work Program.
 - E. Report on minor subdivision plat review/approval
- IV. Other Business
- V. Adjournment

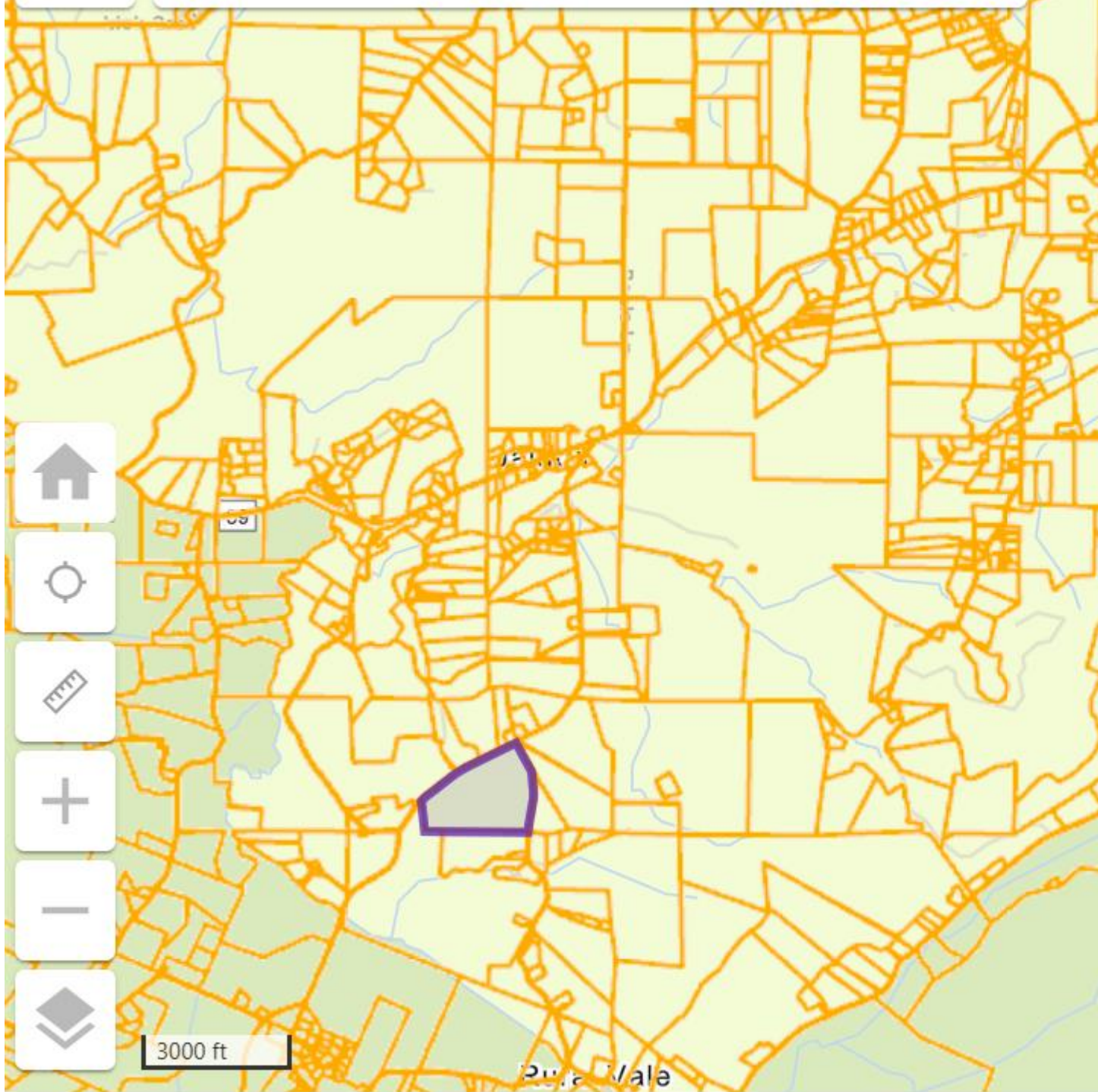




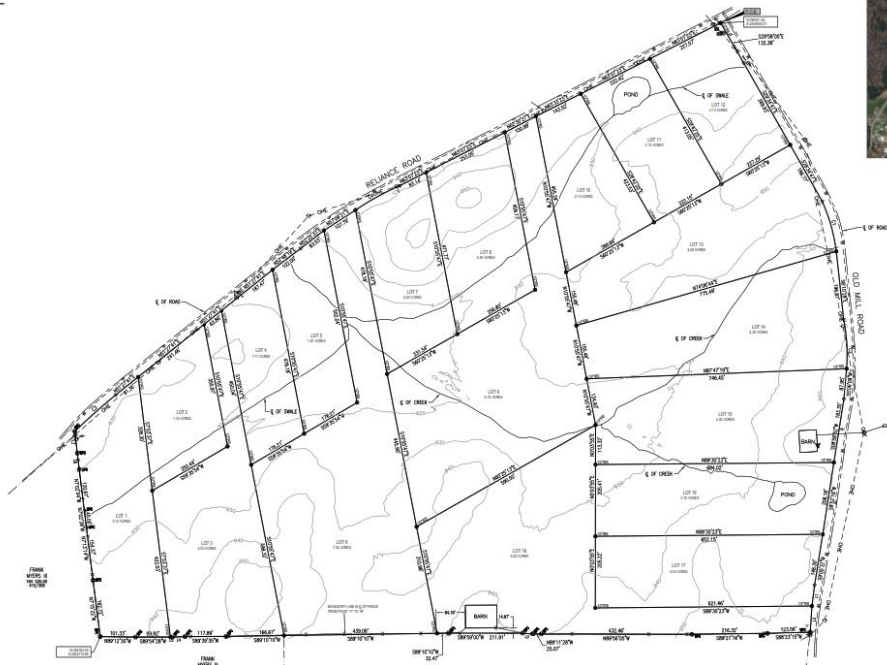
Select County...



Choose a County



LOTS 1-18, RURAL VALE VALLEY



NOTES:

1. This plan was prepared from a survey conducted on 10/15/2018.
2. The survey was conducted using a Leica TS16 total station and a Leica GNSS receiver.
3. The survey was conducted in accordance with the standards of the State of Tennessee.
4. The survey was conducted by a Licensed Professional Surveyor.
5. The survey was conducted in accordance with the standards of the State of Tennessee.
6. The survey was conducted by a Licensed Professional Surveyor.
7. The survey was conducted in accordance with the standards of the State of Tennessee.
8. The survey was conducted by a Licensed Professional Surveyor.
9. The survey was conducted in accordance with the standards of the State of Tennessee.
10. The survey was conducted by a Licensed Professional Surveyor.
11. The survey was conducted in accordance with the standards of the State of Tennessee.
12. The survey was conducted by a Licensed Professional Surveyor.
13. The survey was conducted in accordance with the standards of the State of Tennessee.
14. The survey was conducted by a Licensed Professional Surveyor.
15. The survey was conducted in accordance with the standards of the State of Tennessee.
16. The survey was conducted by a Licensed Professional Surveyor.
17. The survey was conducted in accordance with the standards of the State of Tennessee.
18. The survey was conducted by a Licensed Professional Surveyor.

LEGEND:

- 1. BOUNDARY
- 2. ROAD
- 3. POND
- 4. UTILITY LINE
- 5. EASEMENT
- 6. FENCE
- 7. BARN
- 8. DRIVE
- 9. WALKWAY
- 10. FURNACE
- 11. WELL
- 12. SEWER
- 13. WATER
- 14. GAS
- 15. POWER
- 16. TELEPHONE
- 17. CABLE
- 18. OTHER



ENGINEERING, INC.
 1000 ...
 ...
 ...

LEGEND:

- 1. BOUNDARY
- 2. ROAD
- 3. POND
- 4. UTILITY LINE
- 5. EASEMENT
- 6. FENCE
- 7. BARN
- 8. DRIVE
- 9. WALKWAY
- 10. FURNACE
- 11. WELL
- 12. SEWER
- 13. WATER
- 14. GAS
- 15. POWER
- 16. TELEPHONE
- 17. CABLE
- 18. OTHER

LINE TABLE

LINE #	BEARING	LENGTH (FEET)
1	S 07° 12' 12" W	34.52
2	S 07° 14' 12" W	35.11
3	S 07° 12' 12" W	28.86
4	S 07° 14' 12" W	30.06
5	S 07° 12' 12" W	41.38
6	S 07° 14' 12" W	41.38
7	S 07° 12' 12" W	41.38
8	S 07° 14' 12" W	41.38

AREA:
 ...
 ...

