

# MEMORANDUM

To: Tellico Plains Regional Planning Commission  
From: Laura Smith  
Date: October 2, 2024  
Subject: Monday, October 7, 2024, Tellico Plains Regional Planning Commission Agenda

**AGENDA**  
**REGIONAL PLANNING COMMISSION**  
**Tellico Plains Community Center**  
**Monday, OCTOBER 7, 2024**  
*Immediately following the BZA*

- I Call to Order
- II Approval of minutes from the September 9, 2024 meeting.
- III Planned Agenda Items
  - A. Dave Fankhauser, Portofino Rock Ministries, Inc., for 14-cabins and pavilion, Bear Ln., Tax Map 136, Parcel 46.08, approximately 3.2 acres;
  - B. Subdivision, 4-lots, Property owner, Janke Family Tenn Investment Services Lee Daniels Trustees c/o Daniels Consulting, *Tellico Industry Rd. and Windy Hill Dr.*, Tax Map 136, parcel 005.00, M-1, Industrial District approximately 18.23 acres;
  - C. Review of the Zoning Ordinance, PUDs (Planned Unit Developments) and Public notice requirements, public notice dates, violations and fines;
- IV Reports to commission
- V Other Business
- VI Adjournment



TDOT Imagery Vexcel Imagery Property Lines FEMA Flood Map



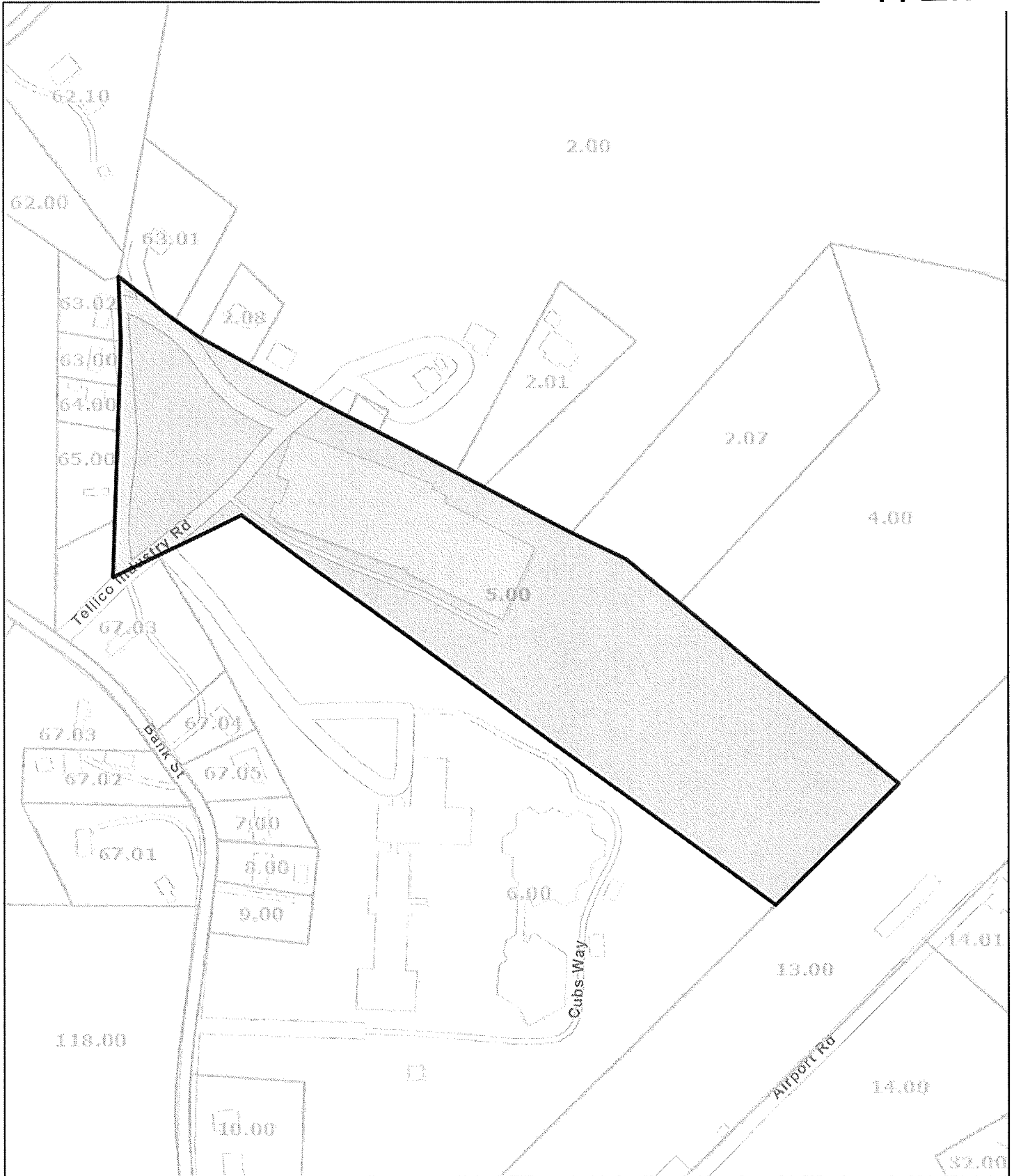
Tennessee F

ITEM A



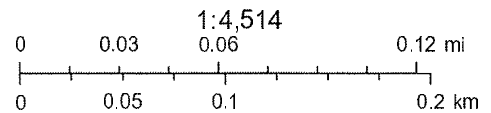
State of Tennessee, Comptroller of the Treasury, Division of Property Assessments (DPA)





Date: October 2, 2024

County: Monroe  
 Owner: JANKE FAMILY TENN INVESTMENT SERVICES  
 Address: TELLICO INDUSTRY RD 116  
 Parcel Number: 136 005.00  
 Deeded Acreage: 18.23  
 Calculated Acreage: 0



State of Tennessee, Comptroller of the Treasury, Division of Property Assessments (DPA), Esri Community Maps Contributors, State of North Carolina DOT, Tennessee STS GIS, © OpenStreetMap, Microsoft, Esri, TomTom, Garmin, SafeGraph, GeoTechnologies, Inc, METI/NASA, USGS, EPA, NPS, US Census Bureau, USDA, USFWS

The property lines are compiled from information maintained by your local

# ITEM B

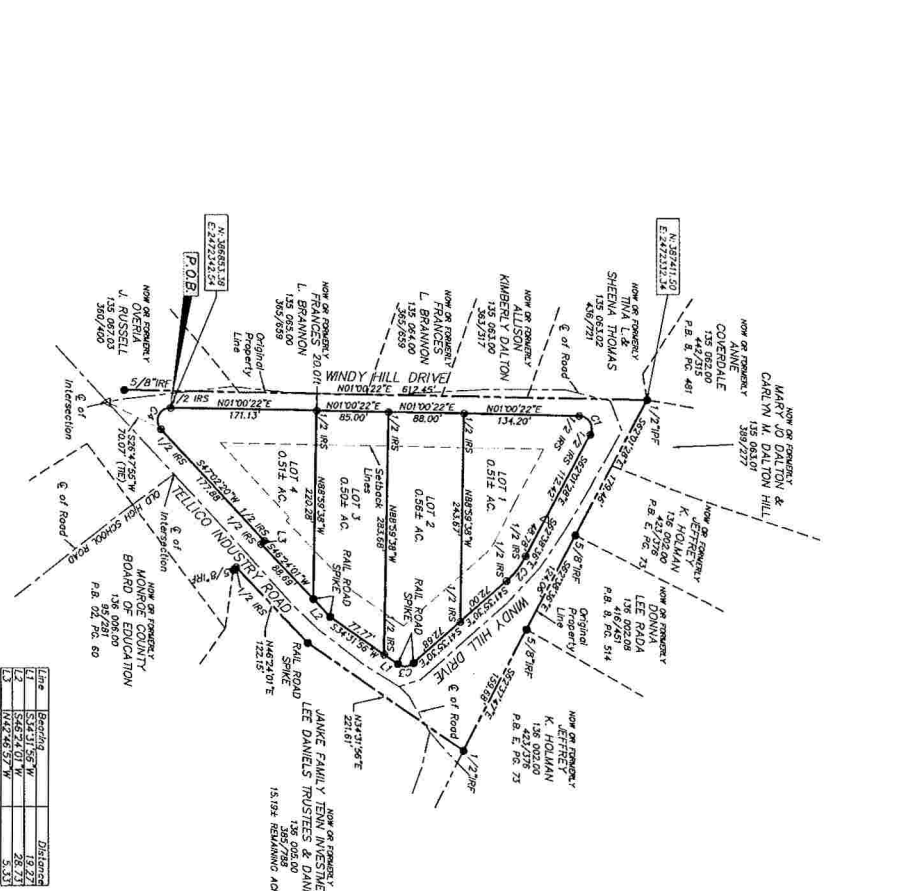
## FINAL PLAT FOR: LOTS 1-4, WINDY HILL SUBDIVISION TOTAL AREA = 2.094 ACRES

Subtract: 0.000  
 1. 2.094  
 2. 0.000  
 3. 0.000  
 4. 0.000  
 5. 0.000  
 6. 0.000  
 7. 0.000  
 8. 0.000  
 9. 0.000  
 10. 0.000  
 11. 0.000  
 12. 0.000  
 13. 0.000  
 14. 0.000  
 15. 0.000  
 16. 0.000  
 17. 0.000  
 18. 0.000  
 19. 0.000  
 20. 0.000  
 21. 0.000  
 22. 0.000  
 23. 0.000  
 24. 0.000  
 25. 0.000  
 26. 0.000  
 27. 0.000  
 28. 0.000  
 29. 0.000  
 30. 0.000  
 31. 0.000  
 32. 0.000  
 33. 0.000  
 34. 0.000  
 35. 0.000  
 36. 0.000  
 37. 0.000  
 38. 0.000  
 39. 0.000  
 40. 0.000  
 41. 0.000  
 42. 0.000  
 43. 0.000  
 44. 0.000  
 45. 0.000  
 46. 0.000  
 47. 0.000  
 48. 0.000  
 49. 0.000  
 50. 0.000  
 51. 0.000  
 52. 0.000  
 53. 0.000  
 54. 0.000  
 55. 0.000  
 56. 0.000  
 57. 0.000  
 58. 0.000  
 59. 0.000  
 60. 0.000  
 61. 0.000  
 62. 0.000  
 63. 0.000  
 64. 0.000  
 65. 0.000  
 66. 0.000  
 67. 0.000  
 68. 0.000  
 69. 0.000  
 70. 0.000  
 71. 0.000  
 72. 0.000  
 73. 0.000  
 74. 0.000  
 75. 0.000  
 76. 0.000  
 77. 0.000  
 78. 0.000  
 79. 0.000  
 80. 0.000  
 81. 0.000  
 82. 0.000  
 83. 0.000  
 84. 0.000  
 85. 0.000  
 86. 0.000  
 87. 0.000  
 88. 0.000  
 89. 0.000  
 90. 0.000  
 91. 0.000  
 92. 0.000  
 93. 0.000  
 94. 0.000  
 95. 0.000  
 96. 0.000  
 97. 0.000  
 98. 0.000  
 99. 0.000  
 100. 0.000

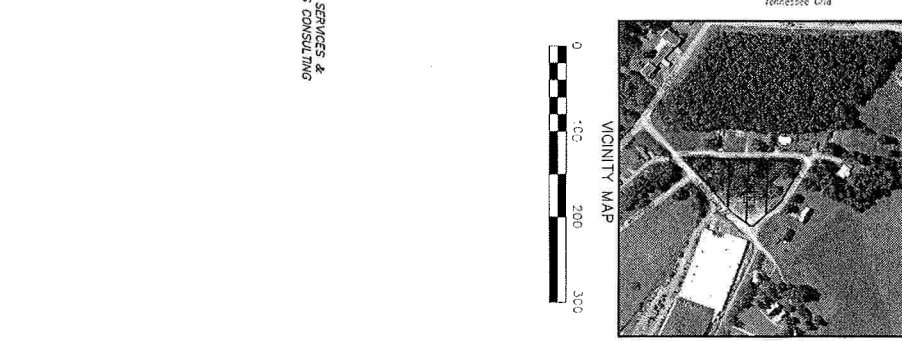
**GENERAL NOTES:**  
 1. The plat is subject to all existing laws, ordinances, regulations, and rules of the State of Tennessee.  
 2. The plat is subject to all existing easements, rights, and interests.  
 3. The plat is subject to all existing liens and encumbrances.  
 4. The plat is subject to all existing covenants, conditions, and restrictions.  
 5. The plat is subject to all existing zoning laws and ordinances.  
 6. The plat is subject to all existing utility easements and lines.  
 7. The plat is subject to all existing survey monuments and markers.  
 8. The plat is subject to all existing survey records and documents.  
 9. The plat is subject to all existing survey errors and omissions.  
 10. The plat is subject to all existing survey disputes and claims.

**STATE OF TENNESSEE**  
 COUNTY OF \_\_\_\_\_  
 I, \_\_\_\_\_, Surveyor, do hereby certify that the above and foregoing is a true and correct copy of the original plat as the same appears in my office.  
 \_\_\_\_\_  
 Surveyor

**STATE OF TENNESSEE**  
 COUNTY OF \_\_\_\_\_  
 I, \_\_\_\_\_, Surveyor, do hereby certify that the above and foregoing is a true and correct copy of the original plat as the same appears in my office.  
 \_\_\_\_\_  
 Surveyor



**LEGEND**  
 1. 2. 3. 4. 5. 6. 7. 8. 9. 10. 11. 12. 13. 14. 15. 16. 17. 18. 19. 20. 21. 22. 23. 24. 25. 26. 27. 28. 29. 30. 31. 32. 33. 34. 35. 36. 37. 38. 39. 40. 41. 42. 43. 44. 45. 46. 47. 48. 49. 50. 51. 52. 53. 54. 55. 56. 57. 58. 59. 60. 61. 62. 63. 64. 65. 66. 67. 68. 69. 70. 71. 72. 73. 74. 75. 76. 77. 78. 79. 80. 81. 82. 83. 84. 85. 86. 87. 88. 89. 90. 91. 92. 93. 94. 95. 96. 97. 98. 99. 100.



**TWM**  
 TOWN & WOODS MEASUREMENTS  
 1500 W. MAIN ST. SUITE 100  
 MEMPHIS, TN 38103  
 (901) 522-1100

**JANKE FAMILY TENN INVESTMENT SERVICES**  
 1500 W. MAIN ST. SUITE 100  
 MEMPHIS, TN 38103  
 (901) 522-1100

**THOUVENOT WADE & MOERCHEN INC.**  
 1500 W. MAIN ST. SUITE 100  
 MEMPHIS, TN 38103  
 (901) 522-1100

**MEADERS SURVEYING**  
 1500 W. MAIN ST. SUITE 100  
 MEMPHIS, TN 38103  
 (901) 522-1100

**CONSTRUCTION ADMINISTRATION**  
 1500 W. MAIN ST. SUITE 100  
 MEMPHIS, TN 38103  
 (901) 522-1100

**GEOSPATIAL SERVICES**  
 1500 W. MAIN ST. SUITE 100  
 MEMPHIS, TN 38103  
 (901) 522-1100